

PUSHING BOUNDARIES.
UNLOCKING POSSIBILITIES.



2022 ANNUAL REPORT

OUR MISSION

Rise unlocks potential and opens doors to success for people with disabilities or other challenges through creative solutions and customized support.

2022 HIGHLIGHTS



Added a **second** Project SEARCH site serving Hennepin County.



Developed **seven** new vocational evaluation sites.



Started **three** new Supported Employment Team (SET) sites and **one** "naturally supported site," providing community work for **18 people**.



Supported **19 people** at our Crystal location who transitioned from Rise transportation to Metro Mobility, increasing their independence.



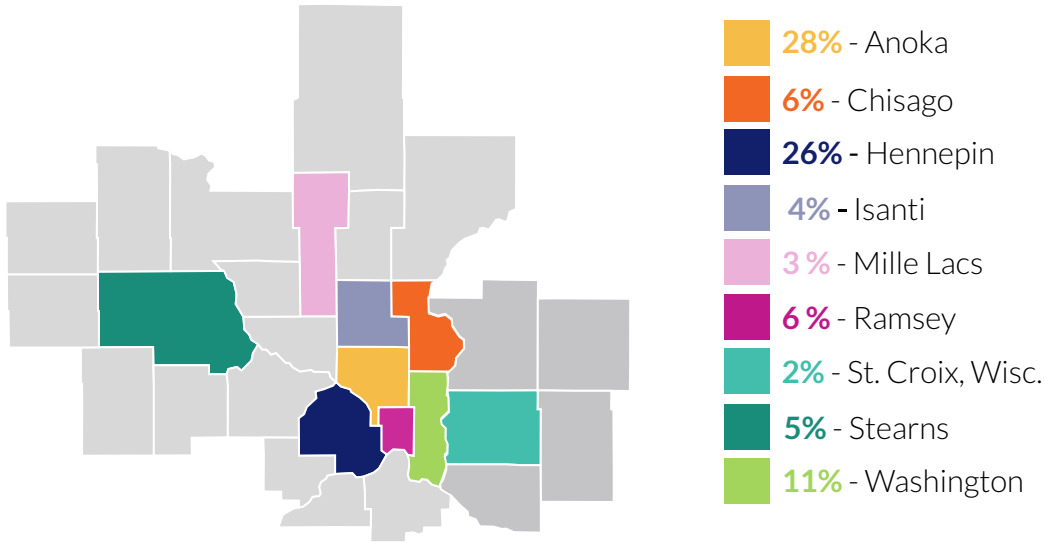
Added Re-Entry Navigator position to assist people involved in the criminal justice system.



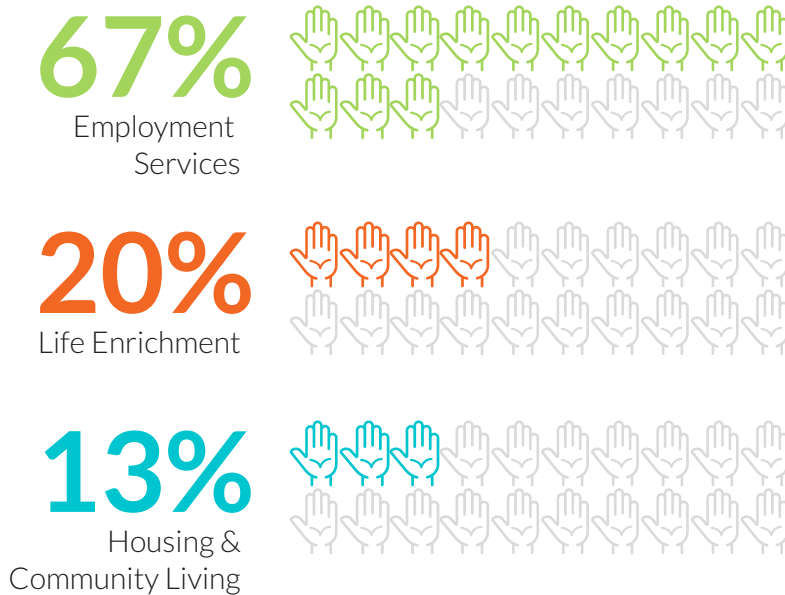
Secured a housing capacity building grant.

WE SUPPORTED 2,611 PEOPLE IN 2022

COUNTY OF RESIDENCE

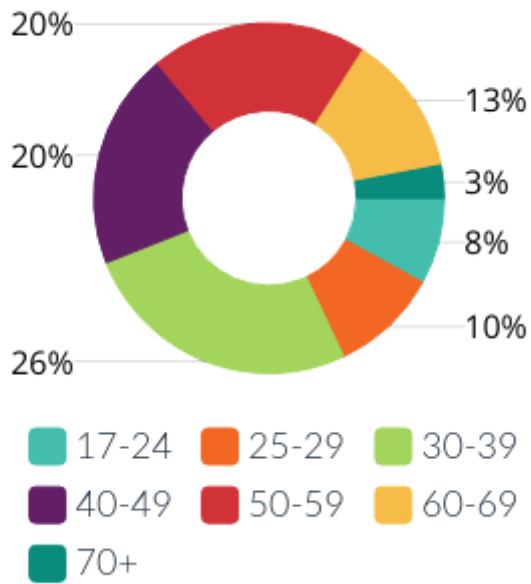


SERVICE LINES

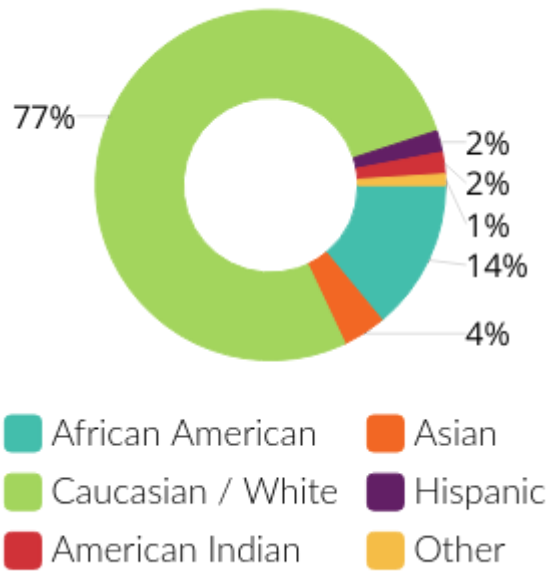


DEMOGRAPHICS

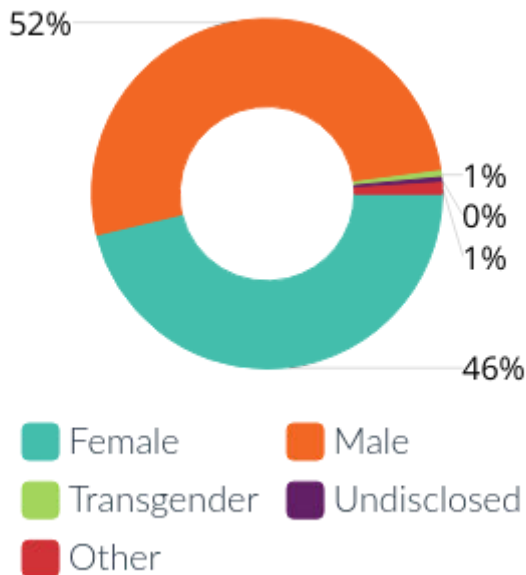
AGE



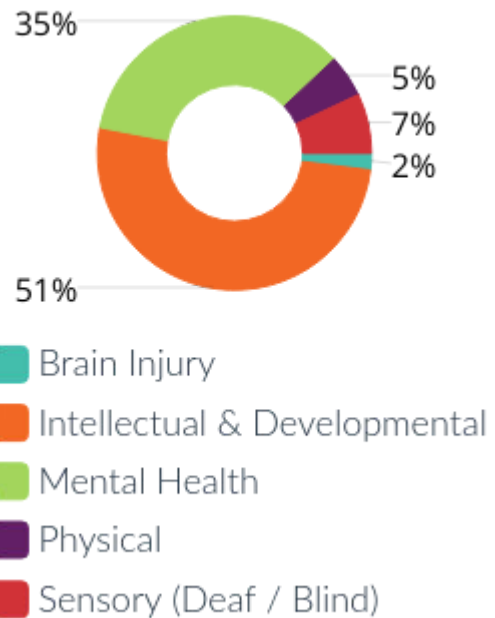
RACE



GENDER



DISABILITY TYPE



EMPLOYMENT & SATISFACTION



"They listen, give non-judgmental support with job searches and applications, act as a great sounding board, and give advice and help with workplace issues."
-Person Served

"I owe my life to Rise!"
- Person Served

331
NEW JOBS IN 2022

262
MENTAL HEALTH
JOB PLACEMENTS

69
DISABILITY
PROGRAM JOB
PLACEMENTS

4 people transitioned from center-based or community (contracted) employment to competitive placements

89% WOULD RECOMMEND RISE
TO OTHER COMPANIES
BUSINESS PARTNERS

"You guys are awesome. You work great with our people, and meet people where they are at in a non-judgmental stance. Great work!"
-County Case Manager

97% AND **94%**
PERSONS SERVED STAKEHOLDERS

**ARE SATISFIED
WITH RISE SERVICES**

The information above reflects survey responses from 229 people served, 95 stakeholders, and 18 business partners.

INCOME STATEMENT

INCOME

PROGRAM SERVICE FEES.....	\$14,372,000
PRODUCTION & LABOR SALES TO PUBLIC.....	\$4,377,000
GRANTS AND SPECIAL PROJECTS.....	\$2,790,000
TRANSPORTATION.....	\$4,656,000
DONATIONS/SPEC. EVENTS/UNITED WAY.....	\$356,000
OTHER, INCLUDING UNREALIZED INVESTMENT LOSSES.....	\$(1,071,000)
TOTAL INCOME.....	\$25,480,000

EXPENSES

DAY TRAINING & HABILITATION PROGRAMS.....	\$16,477,000
VOCATIONAL REHABILITATION & SUPPORTED EMPLOYMENT PROGRAMS.....	\$3,061,000
PRODUCTION.....	\$796,000
MANAGEMENT & GENERAL.....	\$3,434,000
TRANSPORTATION.....	\$2,586,000
ADULT DAY SERVICE SUPPORT PROGRAMS....	\$1,464,000
HOUSING & INDEPENDENT LIVING PROGRAMS.....	\$549,000
ADVANCEMENT.....	\$439,000
TOTAL EXPENSES.....	\$28,806,000

Other Income - COVID 19 Relief Funding..... **\$1,107,000**

BALANCE SHEET

ASSETS

CURRENT ASSETS.....	\$21,955,000
NET LAND, BUILDING & EQUIPMENT.....	\$8,303,000
OTHER ASSETS.....	\$1,342,000
TOTAL ASSETS.....	\$31,600,000

LIABILITIES

CURRENT LIABILITIES.....	\$2,105,000
LONG-TERM DEBT.....	\$1,161,000
OTHER LIABILITIES.....	\$648,000
TOTAL LIABILITIES.....	\$3,914,000

NET ASSETS

NET ASSETS, UNRESTRICTED.....	\$27,111,000
NET ASSETS, RESTRICTED.....	\$575,000
TOTAL NET ASSETS.....	\$27,686,000

STRATEGIC LEADERSHIP TEAM

LYNN NOREN
President and Chief Executive Officer

TIM DICKIE
Chief Program Officer

TOM HAGLUND
Chief Financial Officer

NOEL MCCORMICK
Vice President of Advancement

DENISE THUL
Vice President of Human Resources

JUDY ANDERSEN
Program Director

JODI BLUME
Senior Director of Community Integration
& Life Enrichment Programs

JESSI DUVALL
Director of CBTE & Sensory Programs

MIKE HARPER
Senior Director of Programs & Services,
Central Minnesota

KEITH HOVLAND
Senior Director of CBTE & Supported Employment Teams

DAN MEYERS
Director of Vocational Evaluation & Transition

MICHELE MORRIS
Director of Industrial Services

RYAN NELSON
Director of Transportation

ROBERT REEDY
Senior Director of Vocational Services

BECKY ROTHER
Director of Quality Assurance

JAMIE SMITH
Director of Information Technology

JOHN WATTERS
Program Director, Washington County &
Western Wisconsin

2023 Board of Directors

CHAIR: Kathy Klang, Minneapolis
VICE CHAIR: Kristin Hangebrauck, St. Louis Park
TREASURER: Andrea Murphy, Champlin
SECRETARY: Rachael Smith, Champlin
Lauri Hopkins, Lino Lakes
Anne Holoch, Corcoran
Krishnakumar Iyer, St. Paul
Sue Langfeldt, Deer Park, Wis.
Jim Miley, Inver Grove Heights
Sheila Minske, Minneapolis
Dan Newman, Aitkin
Scott Price, Andover
Cliff Rhoten, White Bear Lake
Kelly Steffens, Prior Lake